



**CHOBHAM
MANOR
E20**

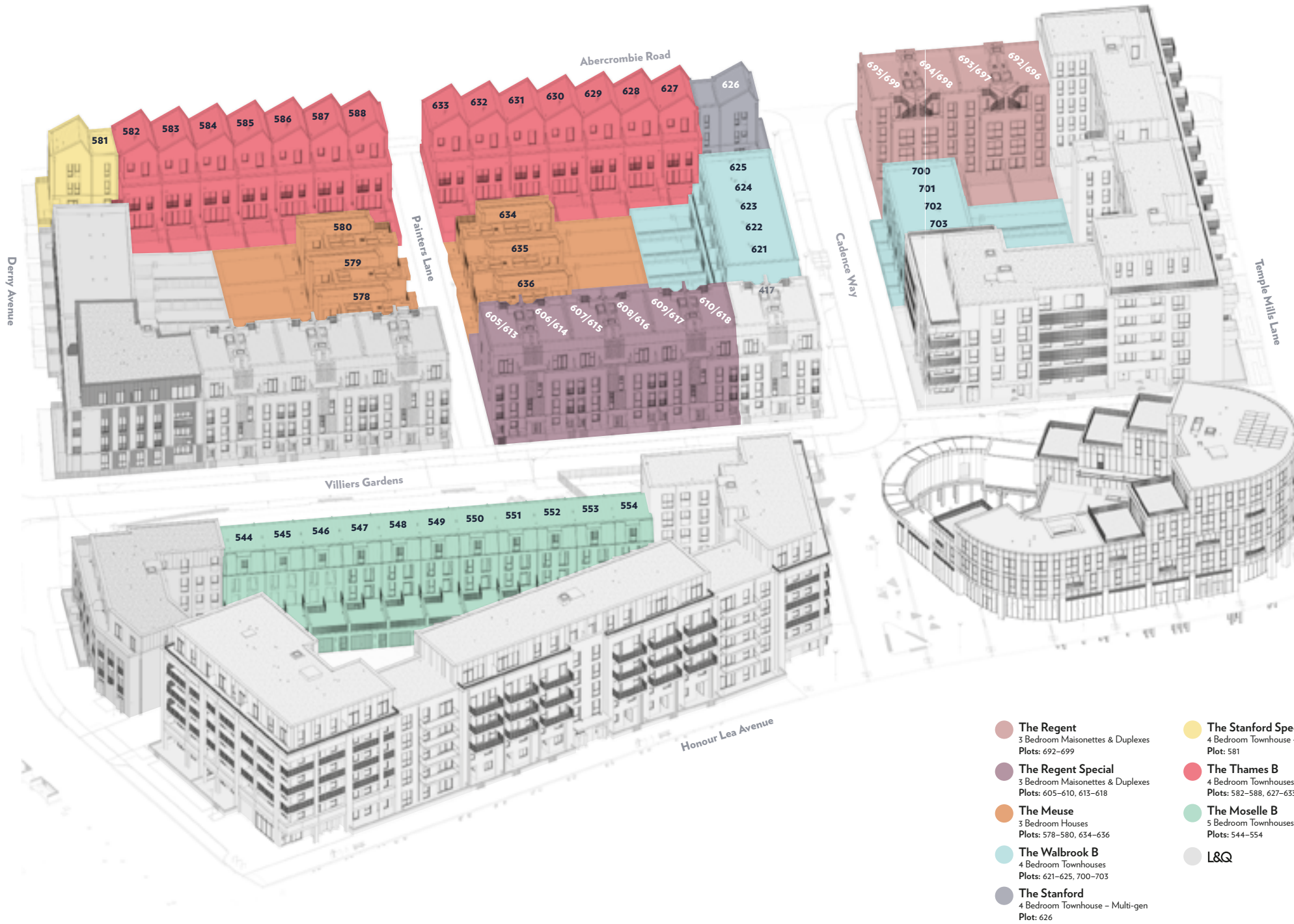
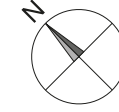


P H A S E 3



**BE PART OF ONE
OF LONDON'S
MOST VIBRANT
NEW COMMUNITIES**

PHASE 3 DEVELOPMENT LAYOUT



- **The Regent**
3 Bedroom Maisonettes & Duplexes
Plots: 692-699
- **The Regent Special**
3 Bedroom Maisonettes & Duplexes
Plots: 605-610, 613-618
- **The Meuse**
3 Bedroom Houses
Plots: 578-580, 634-636
- **The Walbrook B**
4 Bedroom Townhouses
Plots: 621-625, 700-703
- **The Stanford**
4 Bedroom Townhouse - Multi-gen
Plot: 626
- **The Stanford Special**
4 Bedroom Townhouse - Multi-gen
Plot: 581
- **The Thames B**
4 Bedroom Townhouses
Plots: 582-588, 627-633
- **The Moselle B**
5 Bedroom Townhouses
Plots: 544-554
- **L&Q**

CONTENTS

THE REGENT 3 BEDROOM MAISONETTES	P 6
THE REGENT 3 BEDROOM DUPLEXES	P 8
THE REGENT SPECIAL 3 BEDROOM MAISONETTES	P 12
THE REGENT SPECIAL 3 BEDROOM DUPLEXES	P 14
THE MEUSE 3 BEDROOM HOUSES	P 18
THE WALBROOK B 4 BEDROOM TOWNHOUSES	P 22
THE STANFORD 4 BEDROOM TOWNHOUSE - MULTI-GEN	P 26
THE STANFORD SPECIAL 4 BEDROOM TOWNHOUSE - MULTI-GEN	P 30
THE THAMES B 4 BEDROOM TOWNHOUSES	P 34
THE MOSELLE B 5 BEDROOM TOWNHOUSES	P 38

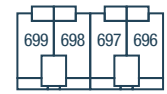
Development layout is indicative only and is subject to change. It is provided for general guidance only, it does not form the whole or any part of an offer or contract.



THE REGENT

3 BEDROOM MAISONNETTE

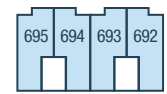
PLOTS 692-695*



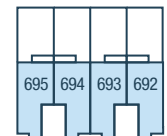
Third Floor



Second Floor



First Floor



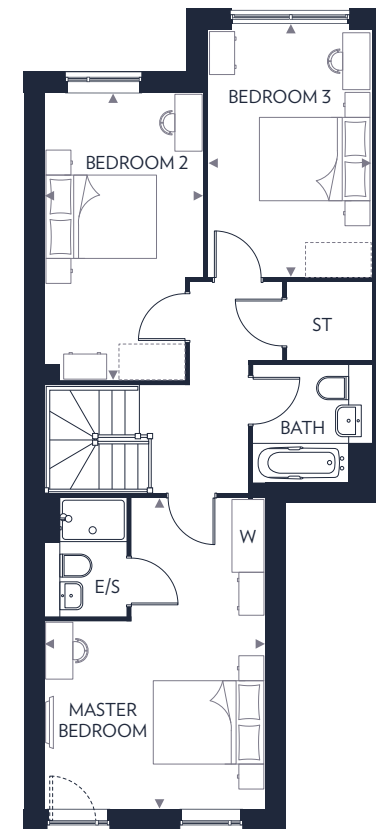
Ground Floor



Ground Floor

Kitchen
4.40m x 2.30m 14'5" x 7'7"

Living/Dining Area
5.90m x 4.40m 19'4" x 14'4"



First Floor

Master Bedroom
5.50m x 4.20m 18'1" x 13'10"

Bedroom 2
5.10m x 3.10m 16'9" x 10'3"

Bedroom 3
4.40m x 2.90m 14'5" x 9'7"

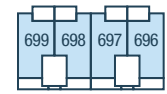
These floor plans are indicative only and depict a typical layout. The dimensions and layouts have been taken from the planning drawings issued, however the dimensions are subject to change following the issue of working drawings. Furniture is used to indicate positioning only. For exact plot specification, details of external and internal finishes, dimensions and floor plan differences consult your sales executive. All dimensions are + or - 100mm and floor plans are not shown to scale. *Plots 693 and 695 are handed. †Garden size varies to all plots.

E/S - En Suite
HIU - Heat Interface Unit
ST - Store
W - Wardrobe
WD - Washer/Dryer

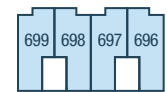
THE REGENT

3 BEDROOM DUPLEX

PLOTS 696-699*



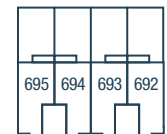
Third Floor



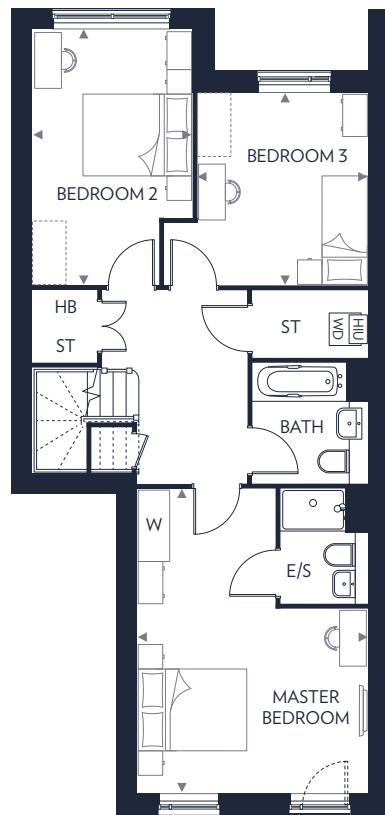
Second Floor



First Floor

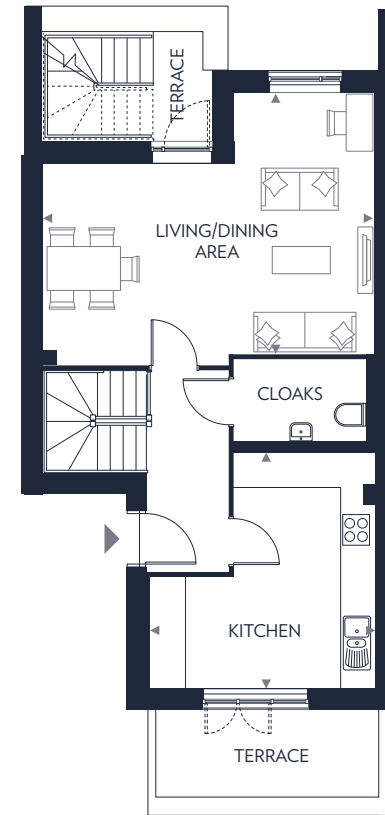


Ground Floor



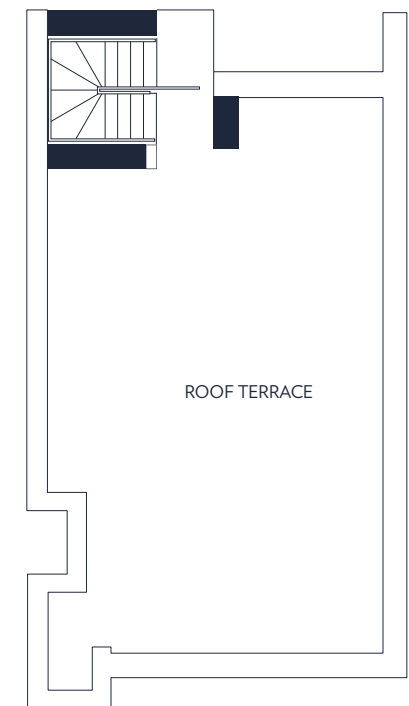
Second Floor

Master Bedroom	5.50m x 3.90m	18'2" x 12'11"
Bedroom 2	4.70m x 2.90m	15'4" x 9'7"
Bedroom 3	3.50m x 2.80m	11'6" x 9'3"



Third Floor

Kitchen	4.30m x 3.80m	14'1" x 12'7"
Living/Dining Area	5.70m x 4.80m	18'8" x 15'7"



Roof Terrace

These floor plans are indicative only and depict a typical layout. The dimensions and layouts have been taken from the planning drawings issued, however the dimensions are subject to change following the issue of working drawings. Furniture is used to indicate positioning only. For exact plot specification, details of external and internal finishes, dimensions and floor plan differences consult your sales executive. All dimensions are + or - 100mm and floor plans are not shown to scale. *Plots 696 & 698 are handed.

E/S - En Suite
 HIU - Heat Interface Unit
 HB - Home Booster
 ST - Store
 W - Wardrobe
 WD - Washer/Dryer



THE REGENT SPECIAL

3 BEDROOM MAISONNETTE

PLOTS 605-610*



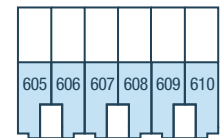
Third Floor



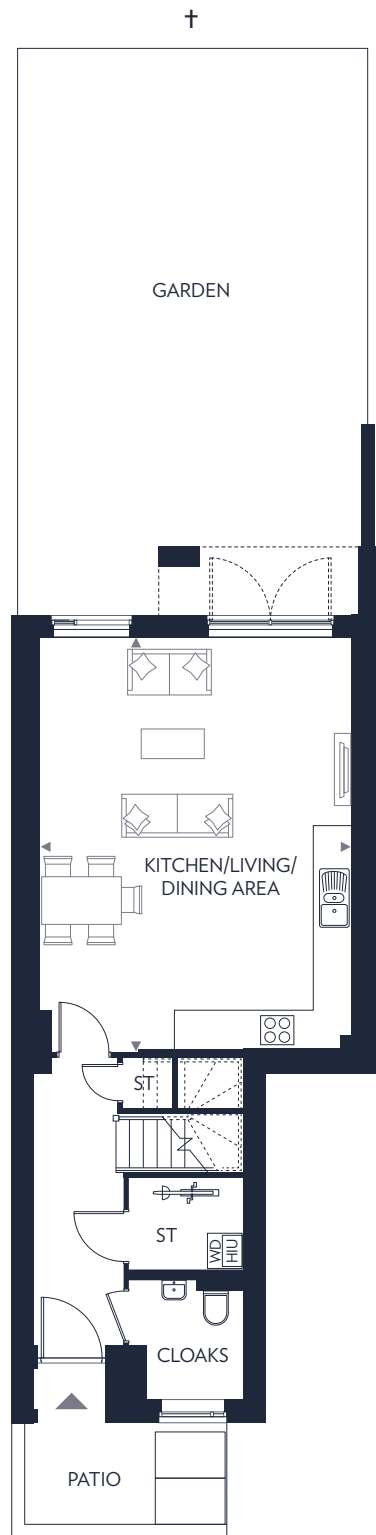
Second Floor



First Floor

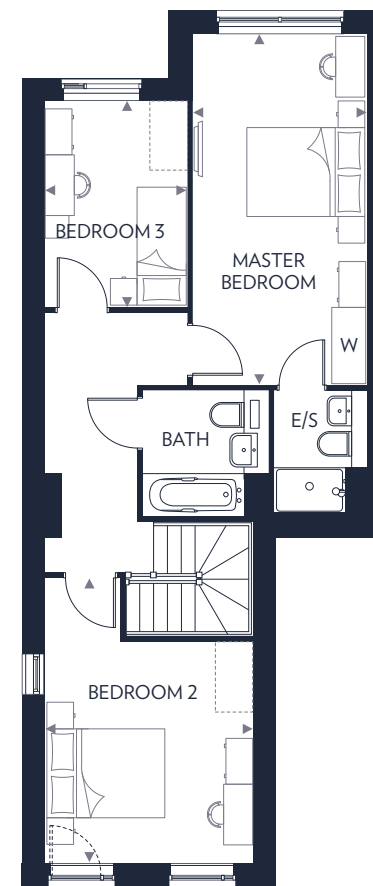


Ground Floor



Ground Floor

Kitchen/ Living/Dining Area
6.90m x 5.20m 22'9" x 17'1"



First Floor

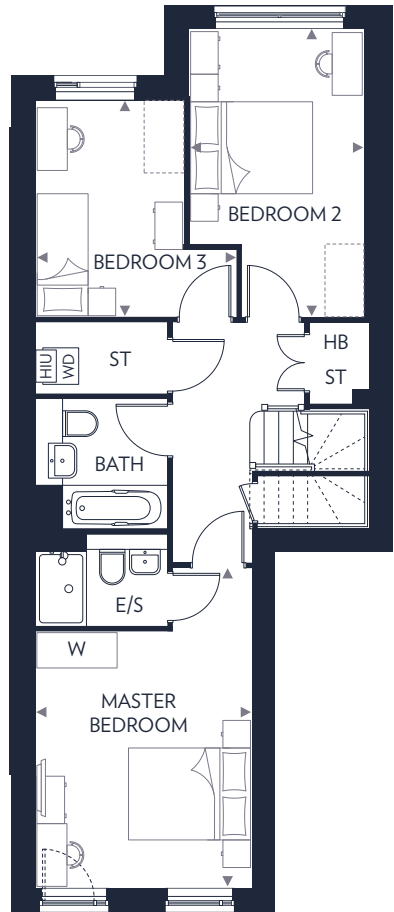
Master Bedroom	5.90m x 2.90m	19'3" x 9'7"
Bedroom 2	4.80m x 3.50m	15'8" x 11'5"
Bedroom 3	3.40m x 2.40m	11'4" x 7'10"

These floor plans are indicative only and depict a typical layout. The dimensions and layouts have been taken from the planning drawings issued, however the dimensions are subject to change following the issue of working drawings. Furniture is used to indicate positioning only. For exact plot specification, details of external and internal finishes, dimensions and floor plan differences consult your sales executive. All dimensions are + or - 100mm and floor plans are not shown to scale. *Plots 606, 608 & 610 are handed. †Garden size varies to all plots.

E/S - En Suite
HIU - Heat Interface Unit
ST - Store
W - Wardrobe
WD - Washer/Dryer

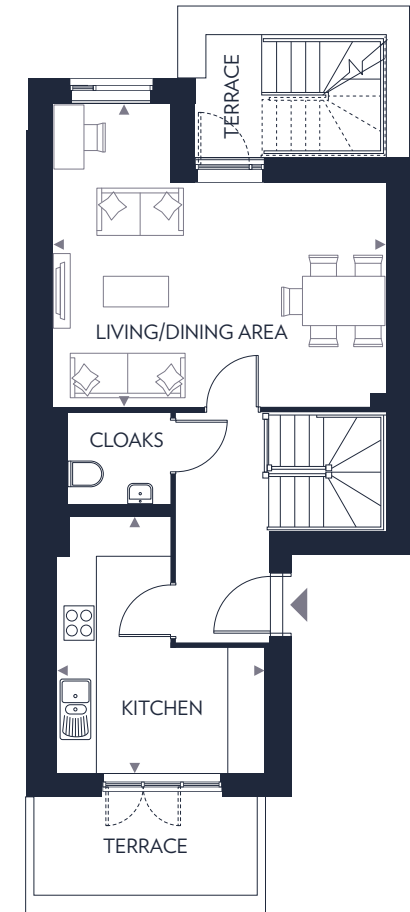
THE REGENT SPECIAL

3 BEDROOM DUPLEX PLOTS 613-618*



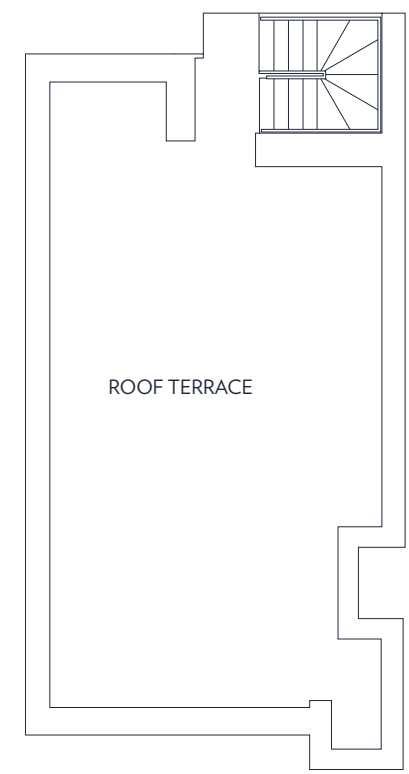
Second Floor

Master Bedroom	4.20m x 3.50m	13'8" x 11'5"
Bedroom 2	4.60m x 2.80m	15'2" x 9'4"
Bedroom 3	3.50m x 3.20m	11'6" x 10'7"

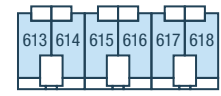


Third Floor

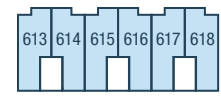
Kitchen	4.30m x 3.40m	13'7" x 11'1"
Living/Dining Area	5.40m x 4.90m	17'8" x 16'1"



Roof Terrace



Third Floor



Second Floor



First Floor



Ground Floor

These floor plans are indicative only and depict a typical layout. The dimensions and layouts have been taken from the planning drawings issued, however the dimensions are subject to change following the issue of working drawings. Furniture is used to indicate positioning only. For exact plot specification, details of external and internal finishes, dimensions and floor plan differences consult your sales executive. All dimensions are + or - 100mm and floor plans are not shown to scale. *Plots 614, 616 & 618 are handed.

- E/S - En Suite
- HIU - Heat Interface Unit
- HB - Home Booster
- ST - Store
- W - Wardrobe
- WD - Washer/Dryer



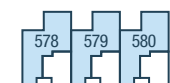
THE MEUSE

3 BEDROOM HOUSE

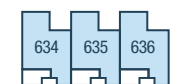
PLOTS 578-580 & 634-636



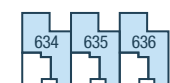
First Floor



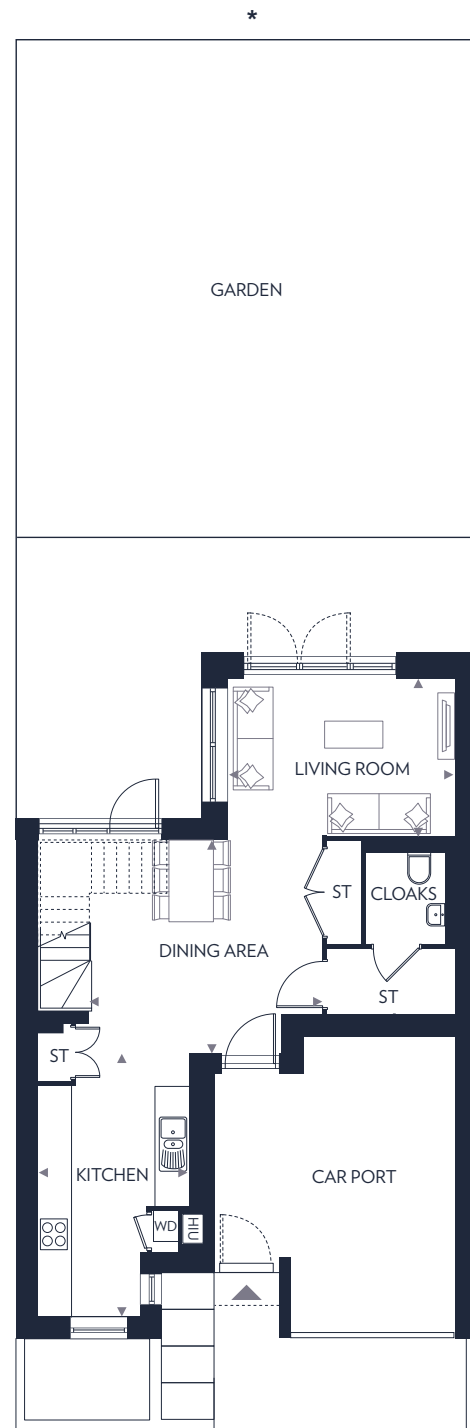
Ground Floor



First Floor

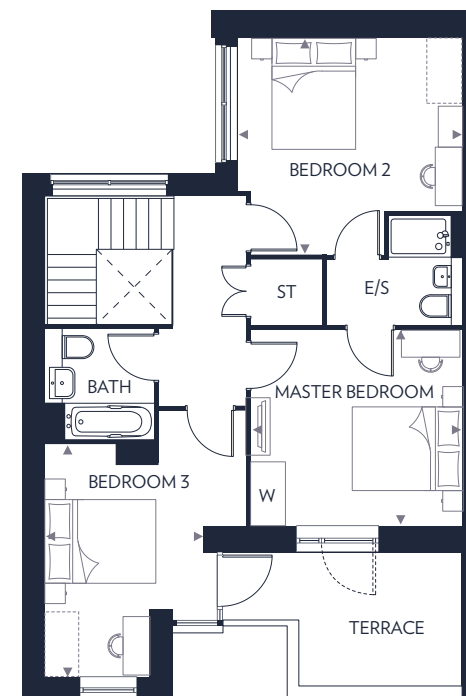


Ground Floor



Ground Floor

Kitchen	5.10m x 2.90m	16'8" x 9'6"
Living Room	4.40m x 3.00m	14'5" x 9'11"
Dining Area	4.50m x 4.10m	14'8" x 13'5"



First Floor

Master Bedroom	4.10m x 3.80m	13'6" x 12'4"
Bedroom 2	4.40m x 4.20m	14'5" x 13'9"
Bedroom 3	4.10m x 3.00m	13'5" x 10'0"

These floor plans are indicative only and depict a typical layout. The dimensions and layouts have been taken from the planning drawings issued, however the dimensions are subject to change following the issue of working drawings. Furniture is used to indicate positioning only. For exact plot specification, details of external and internal finishes, dimensions and floor plan differences consult your sales executive. All dimensions are + or - 100mm and floor plans are not shown to scale. *Garden size varies to all plots.

E/S - En Suite
 HIU - Heat Interface Unit
 ST - Store
 W - Wardrobe
 WD - Washer/Dryer



THE WALBROOK B

4 BEDROOM TOWNHOUSE

PLOTS 621-625 & 700-703



700 701 702 703

Second Floor

700 701 702 703

First Floor

700 701 702 703

Ground Floor

621 622 623 624 625

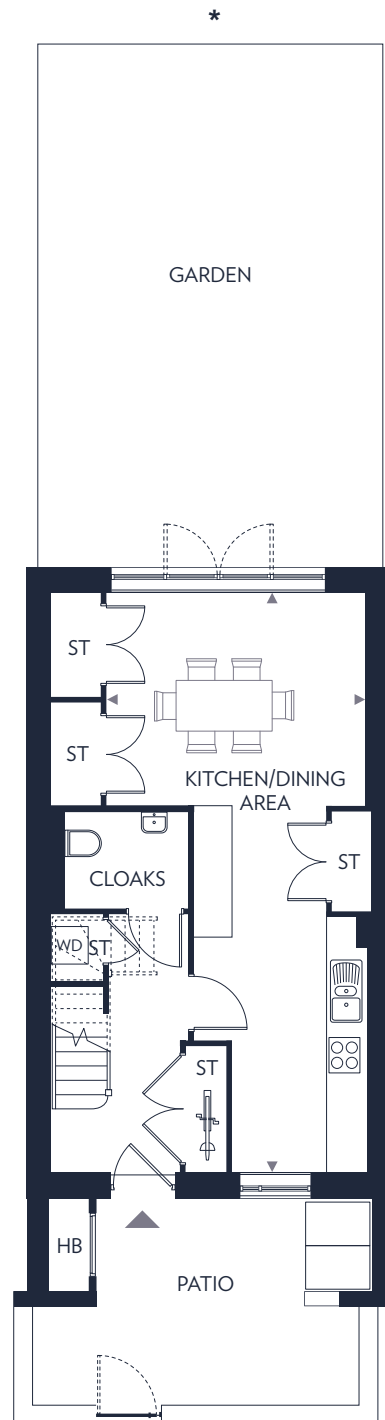
Second Floor

621 622 623 624 625

First Floor

621 622 623 624 625

Ground Floor



Ground Floor

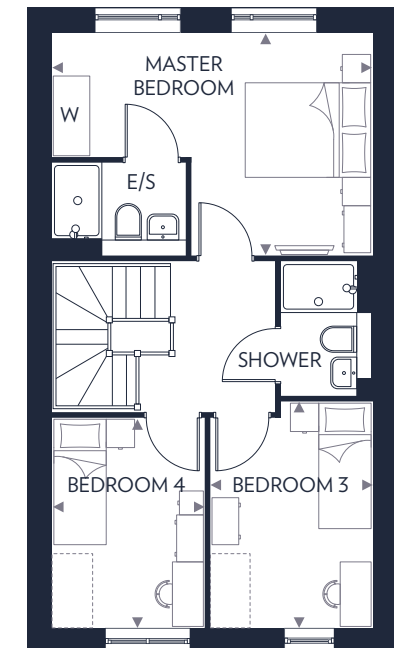
Kitchen/Dining Area
9.10m x 4.10m 29'11" x 13'4"



First Floor

Living Room
5.00m x 3.50m 16'7" x 11'6"

Bedroom 2
5.10m x 3.30m 16'7" x 10'10"



Second Floor

Master Bedroom
5.00m x 3.50m 16'7" x 11'6"

Bedroom 3
3.60m x 2.60m 11'8" x 8'4"

Bedroom 4
3.30m x 2.40m 10'10" x 7'11"

These floor plans are indicative only and depict a typical layout. The dimensions and layouts have been taken from the planning drawings issued, however the dimensions are subject to change following the issue of working drawings. Furniture is used to indicate positioning only. For exact plot specification, details of external and internal finishes, dimensions and floor plan differences consult your sales executive. All dimensions are + or - 100mm and floor plans are not shown to scale. *Garden size varies to all plots.

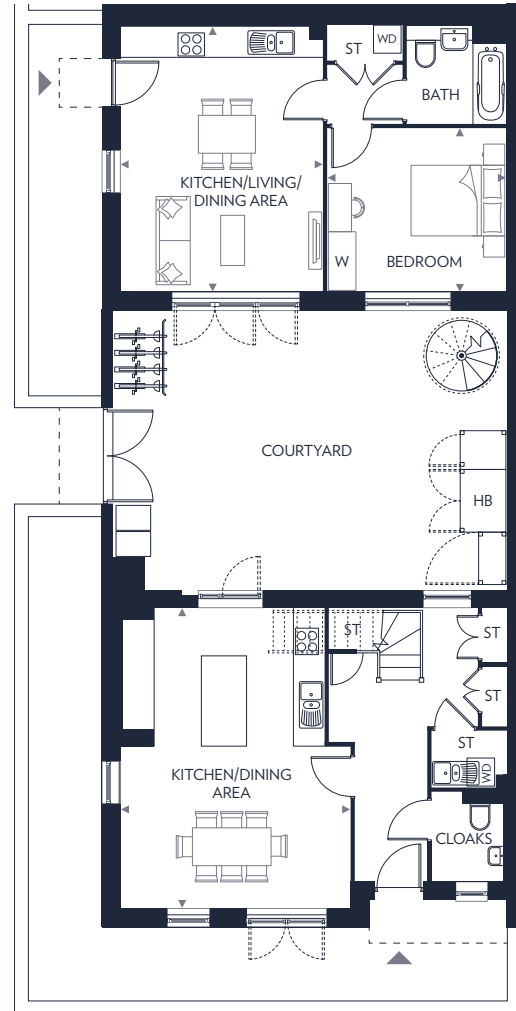
E/S - En Suite
HB - Home Booster
ST - Store
W - Wardrobe
WD - Washer/Dryer



THE STANFORD

4 BEDROOM TOWNHOUSE - MULTI-GEN

PLOT 626



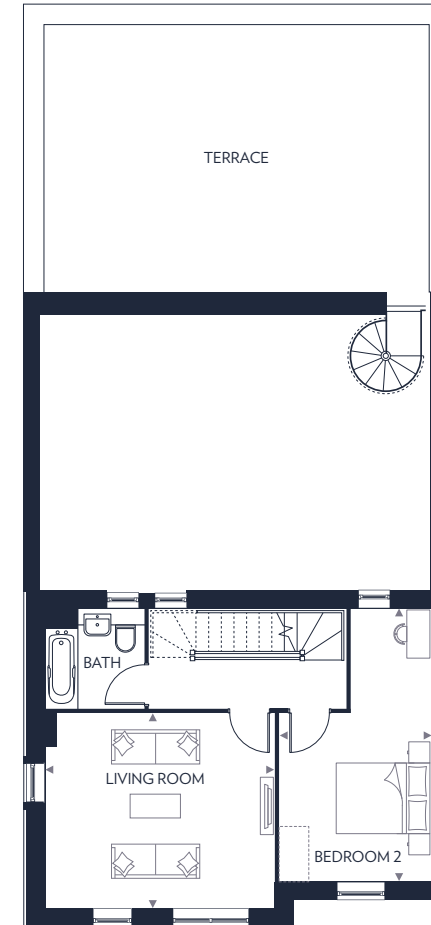
Ground Floor

Kitchen/Dining Area
6.30m x 4.80m 20'8" x 15'11"

Ground Floor Annexe

Kitchen/Living/Dining Area
5.60m x 4.30m 18'5" x 14'0"

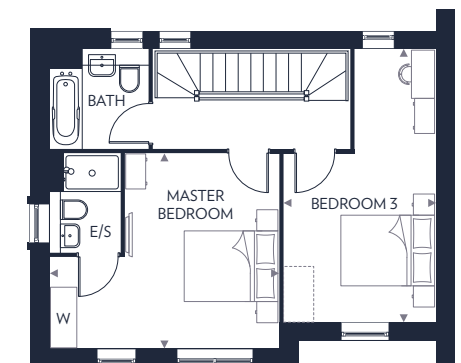
Bedroom
3.80m x 3.50m 12'5" x 11'5"



First Floor

Living Room
4.80m x 4.10m 15'11" x 13'6"

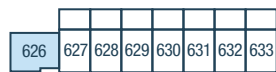
Bedroom 2
5.70m x 3.20m 18'10" x 10'6"



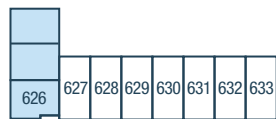
Second Floor

Master Bedroom
4.80m x 4.10m 15'11" x 13'6"

Bedroom 3
5.70m x 3.20m 18'10" x 10'6"



Second Floor



First Floor



Ground Floor

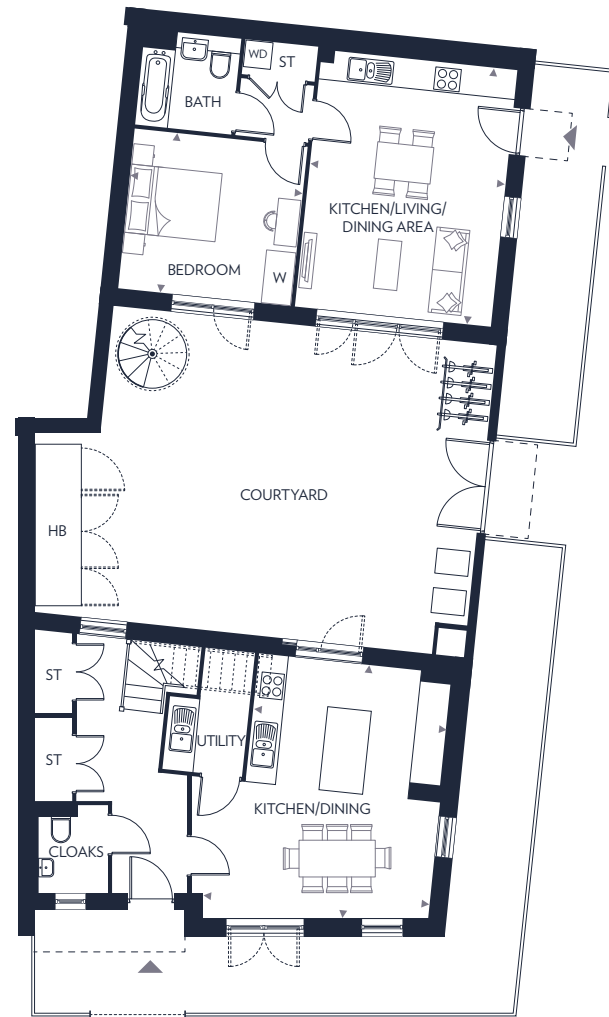
These floor plans are indicative only and depict a typical layout. The dimensions and layouts have been taken from the planning drawings issued, however the dimensions are subject to change following the issue of working drawings. Furniture is used to indicate positioning only. For exact plot specification, details of external and internal finishes, dimensions and floor plan differences consult your sales executive. All dimensions are + or - 100mm and floor plans are not shown to scale.

E/S - En Suite
HB - Home Booster
ST - Store
W - Wardrobe
WD - Washer/Dryer



THE STANFORD SPECIAL

4 BEDROOM TOWNHOUSE - MULTI-GEN PLOT 581



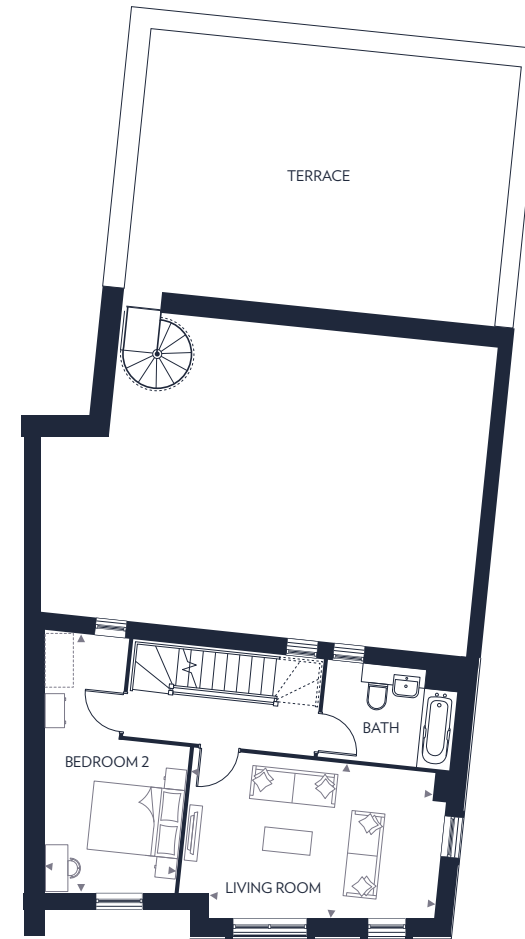
Ground Floor

Kitchen/Dining Area
5.30m x 4.90m 17'5" x 15'11"

Ground Floor Annexe

Kitchen/Living/Dining Area
5.60m x 4.30m 18'5" x 14'0"

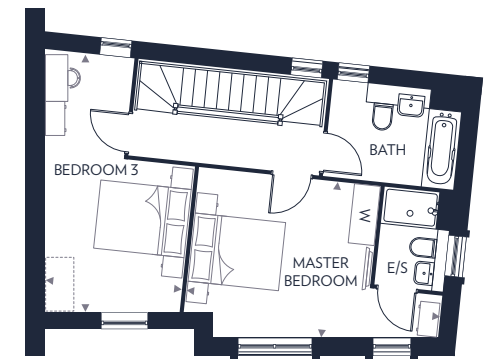
Bedroom
3.80m x 3.50m 12'5" x 11'5"



First Floor

Living Room
5.30m x 3.70m 17'3" x 12'0"

Bedroom 2
5.40m x 2.80m 17'7" x 9'4"



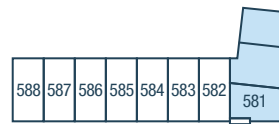
Second Floor

Master Bedroom
5.50m x 3.70m 18'2" x 12'0"

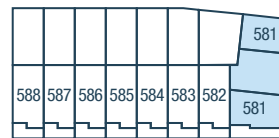
Bedroom 3
5.40m x 2.90m 17'7" x 9'7"



Second Floor



First Floor



Ground Floor

E/S - En Suite
HB - Home Booster
ST - Store
W - Wardrobe
WD - Washer/Dryer

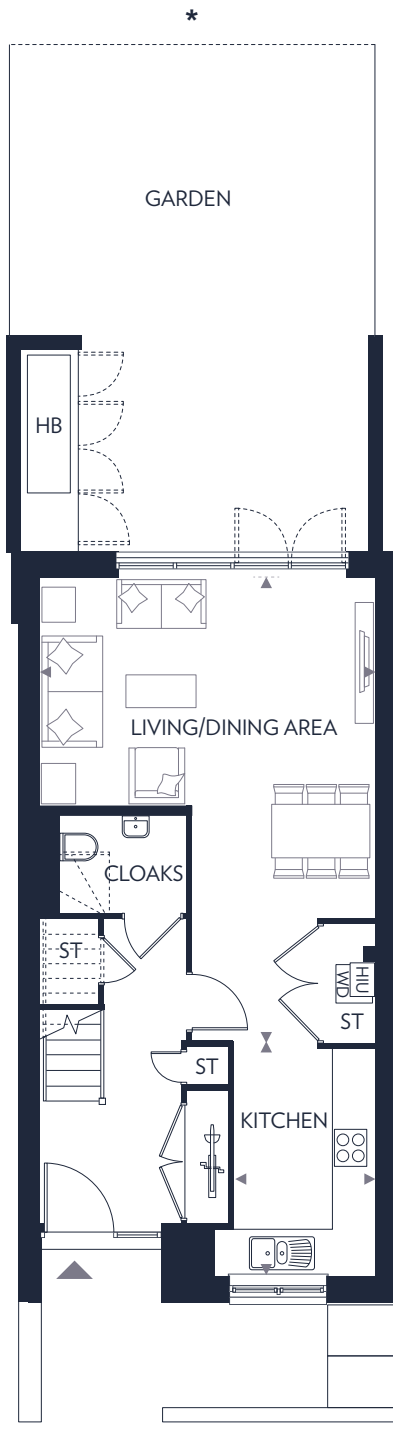
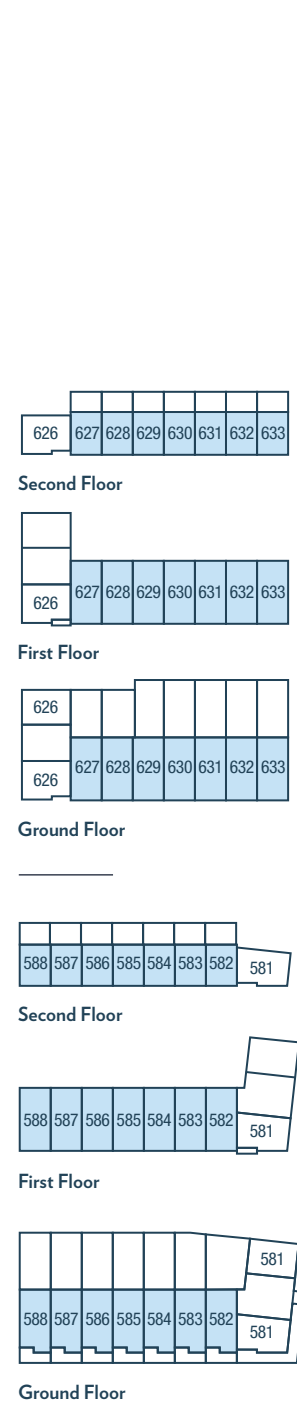
These floor plans are indicative only and depict a typical layout. The dimensions and layouts have been taken from the planning drawings issued, however the dimensions are subject to change following the issue of working drawings. Furniture is used to indicate positioning only. For exact plot specification, details of external and internal finishes, dimensions and floor plan differences consult your sales executive. All dimensions are + or - 100mm and floor plans are not shown to scale.



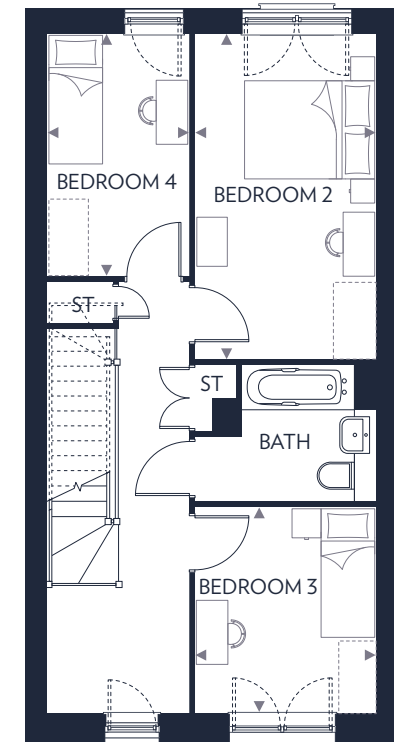
THE THAMES B

4 BEDROOM TOWNHOUSE

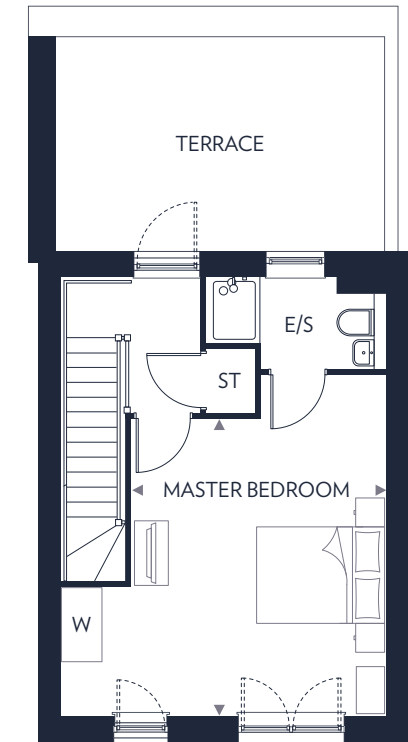
PLOTS 582-588 & 627-633



Ground Floor
 Kitchen
 4.20m x 2.20m 13'10" x 7'1"
 Living/Dining Area
 6.20m x 5.00m 20'0" x 16'4"



First Floor
 Bedroom 2
 4.90m x 2.70m 16'1" x 9'0"
 Bedroom 3
 3.70m x 2.20m 12'3" x 7'1"
 Bedroom 4
 3.30m x 2.70m 10'10" x 9'0"



Second Floor
 Master Bedroom
 5.10m x 4.90m 16'8" x 16'1"

E/S – En Suite
 HB – Home Booster
 HIU – Heat Interface Unit
 ST – Store
 W – Wardrobe
 WD – Washer/Dryer

These floor plans are indicative only and depict a typical layout. The dimensions and layouts have been taken from the planning drawings issued, however the dimensions are subject to change following the issue of working drawings. Furniture is used to indicate positioning only. For exact plot specification, details of external and internal finishes, dimensions and floor plan differences consult your sales executive. All dimensions are + or - 100mm and floor plans are not shown to scale. *Garden size varies to all plots.



THE MOSELLE B

5 BEDROOM TOWNHOUSE

PLOTS 544-554



544	545	546	547	548	549	550	551	552	553	554
-----	-----	-----	-----	-----	-----	-----	-----	-----	-----	-----

Third Floor

544	545	546	547	548	549	550	551	552	553	554
-----	-----	-----	-----	-----	-----	-----	-----	-----	-----	-----

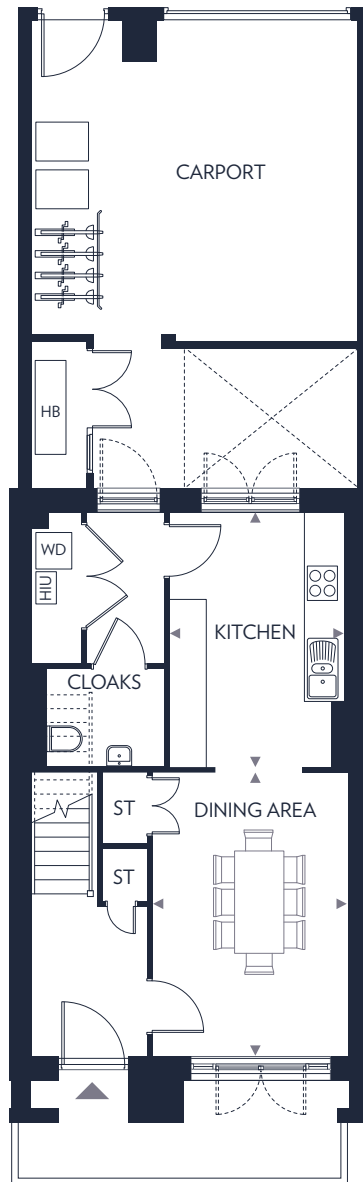
Second Floor

544	545	546	547	548	549	550	551	552	553	554
-----	-----	-----	-----	-----	-----	-----	-----	-----	-----	-----

First Floor

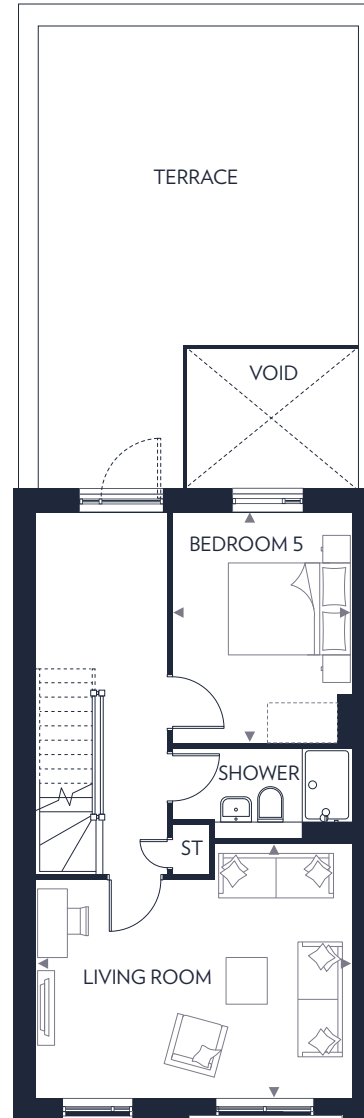
544	545	546	547	548	549	550	551	552	553	554
-----	-----	-----	-----	-----	-----	-----	-----	-----	-----	-----

Ground Floor



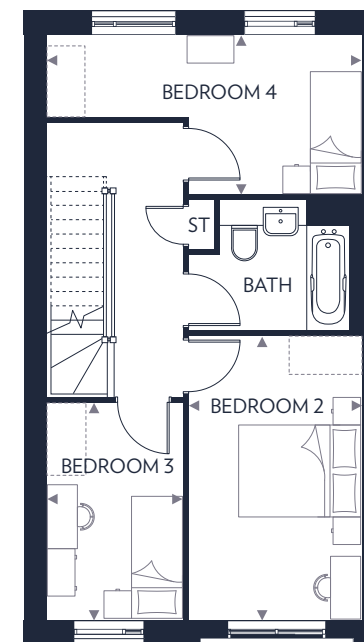
Ground Floor

Kitchen	4.10m x 2.80m	13'6" x 9'4"
Dining Area	4.60m x 3.20m	15'0" x 10'5"



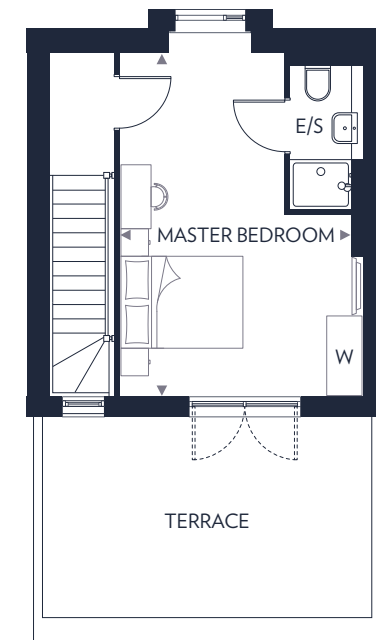
First Floor

Living Room	5.10m x 4.10m	16'9" x 13'5"
Bedroom 5	3.70m x 2.90m	12'3" x 9'6"



Second Floor

Bedroom 2	4.60m x 2.80m	15'1" x 9'3"
Bedroom 3	3.50m x 2.20m	11'7" x 7'3"
Bedroom 4	5.10m x 2.60m	16'9" x 8'6"



Third Floor

Master Bedroom	5.50m x 4.00m	17'11" x 13'0"
----------------	---------------	----------------

These floor plans are indicative only and depict a typical layout. The dimensions and layouts have been taken from the planning drawings issued, however the dimensions are subject to change following the issue of working drawings. Furniture is used to indicate positioning only. For exact plot specification, details of external and internal finishes, dimensions and floor plan differences consult your sales executive. All dimensions are + or - 100mm and floor plans are not shown to scale.

E/S - En Suite
 HB - Home Booster
 HIU - Heat Interface Unit
 ST - Store
 W - Wardrobe
 WD - Washer/Dryer

**BUILT ON THE
OLYMPIC LEGACY
AND DESIGNED TO
REVOLUTIONISE
CITY LIVING**



In accordance with the Consumer Protection from Unfair Trading Practices Regulations 2008, the information contained in this document is provided for general guidance only, and does not form the whole or any part of any offer or contract. These floor plans are indicative only and depict typical layouts. The dimensions and layouts have been taken from the planning drawings issued, however the dimensions are subject to change following the issue of working drawings. Furniture is used to indicate positioning only. For exact plot specification, details of external and internal finishes, dimensions and floor plan differences consult your Sales Executive. All dimensions are + or - 100mm and floor plans are not shown to scale. Customers are strongly advised to contact a Taylor Wimpey representative for further details and to satisfy themselves as to their accuracy. All information and computer representations contained in this document are taken from design intent material and may be subject to further design development. January 2020. Designed by Focus IMC.

CHOBHAM MANOR

Queen Elizabeth Olympic Park,
1 Hyett Terrace,
Honour Lea Avenue,
Stratford, London, E20 1HH

020 3535 6987

chobhammanor.co.uk



**Taylor
Wimpey**